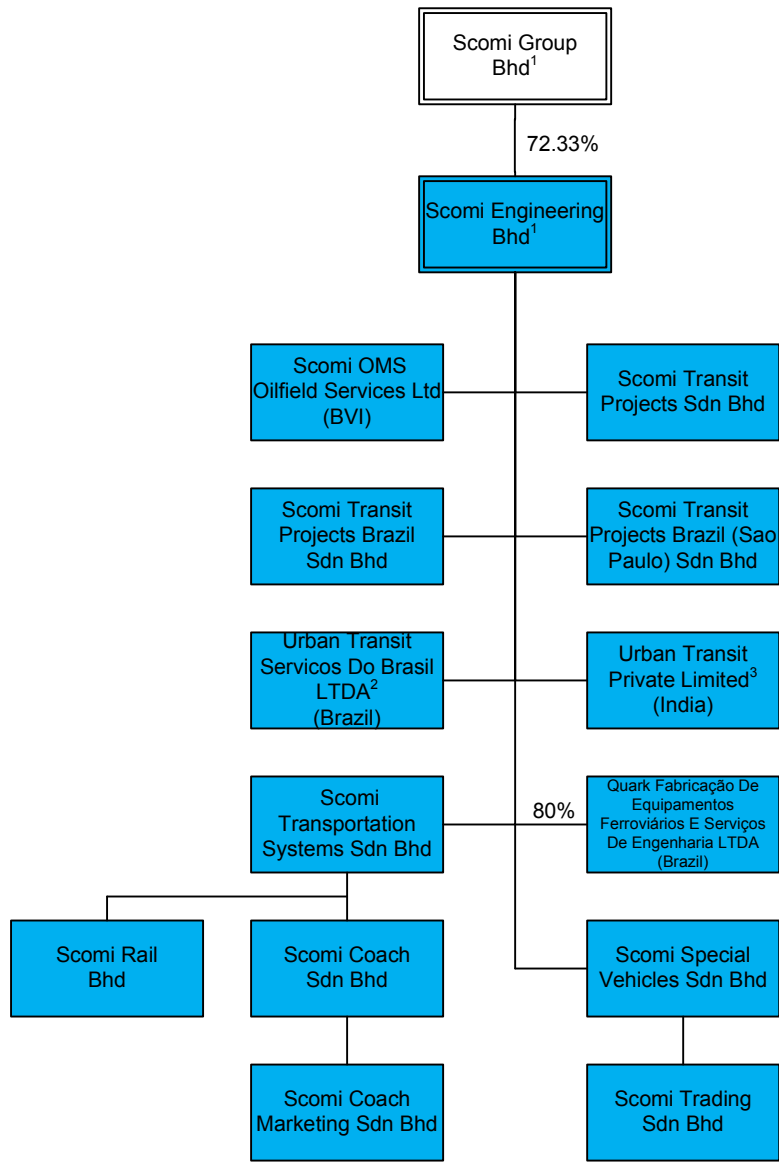


Scomi Engineering Bhd Group Corporate Structure as at 30 June 2016



Notes:

¹ Listed on the Bursa Malaysia Securities Berhad (Kuala Lumpur Stock Exchange).

² Includes 1 quota (similar to share in other jurisdictions) held by Scomi Rail Bhd.

³ Includes 0.0004% held by Scomi Rail Bhd.

- Except as otherwise expressly stated, all companies in this corporate structure are incorporated in Malaysia.
- Except as otherwise expressly stated, all companies in this corporate structure are wholly owned by their respective holding companies.